

Total: 207 pages

Date: 30 September 2024

TPB Ref.: A/YL-KTS/993

By Email

Town Planning Board
15/F, North Point Government Offices
333, Java Road
North Point
Hong Kong
(Attn: The Secretary)

Dear Sir,

Proposed Temporary Logistics Centre for a Period of 3 Years & Filling of Land at Lot 403 RP (Part) in D.D. 103 and Adjoining Government Land, Kam Tin, Yuen Long, New Territories

The response to comments of CE/MN, DSD and Director of Fire Services (D of FS) are attached herewith.

The updated tree group inspection report and the compensatory planting proposal are also attached herewith.

Should you have any enquiries, please feel free to contact our Mr. Patrick Tsui at 5114 9258 at your convenience.

Yours faithfully,



Patrick Tsui

c.c. Fanling, Sheung Shui and Yuen Long East District Planning Office (Attn: Ms. Selena SIN) – By Email

Response to DSD's comments - Proposed Temporary Logistics Centre for a Period of 3 Years and Filling of Land in "Agriculture" Zone, Lot 403 RP (Part) in D.D. 103 and Adjoining Government Land, Kam Tin, Yuen Long, New Territories (Application No. A/YL-KTS/993)

(a) Please indicate the existing opening drain and the discharge path on photo 1 & 2. Please also indicate the photo taken directions on drawing.	please see the updated Figure 4.
(b) Please show the size of the existing drainage facilities, i.e. the aforementioned existing opening drain and the discharge path, on drawings.	please see the updated Figure 4.
(c) Connection details of the proposed channel at the proposed channel at the proposed discharge point at river should be given.	please see the enclosed Figure 5.
(d) The applicant mentioned in RtC (v) that the existing river is able to cater for the additional stormwater from the subject site. Please substantiate. Please also indicate the size of the river on drawing/photo.	Due to the catchment area of the subject site hasn't been changed, it is therefore, no additional stormwater will be discharged to the existing river.
(e) The velocities of stormwater flow in channels should be checked and given in the submission.	please see the enclosed design chart which shown the revised gradient is 1 : 55 and the velocites of stormwater flow in channel is around 3.9m/s.
Please specify the distance between the proposed gaps and the height of the 100mm gaps in figure 4.	please see the updated Figure 4.

Photo 1 (P1)



Photo 2 (P2)





Photo 3 (P3)

Drawing No.

Figure 4

Project

Proposed Temporary Logistics Centre for a Period of 3 Years and, Filling of Land at Lot 403 RP (Part) in D.D. 103 & Adjoining Government Land, Kam Tin, Yuen Long, New Territories

Drawing Title

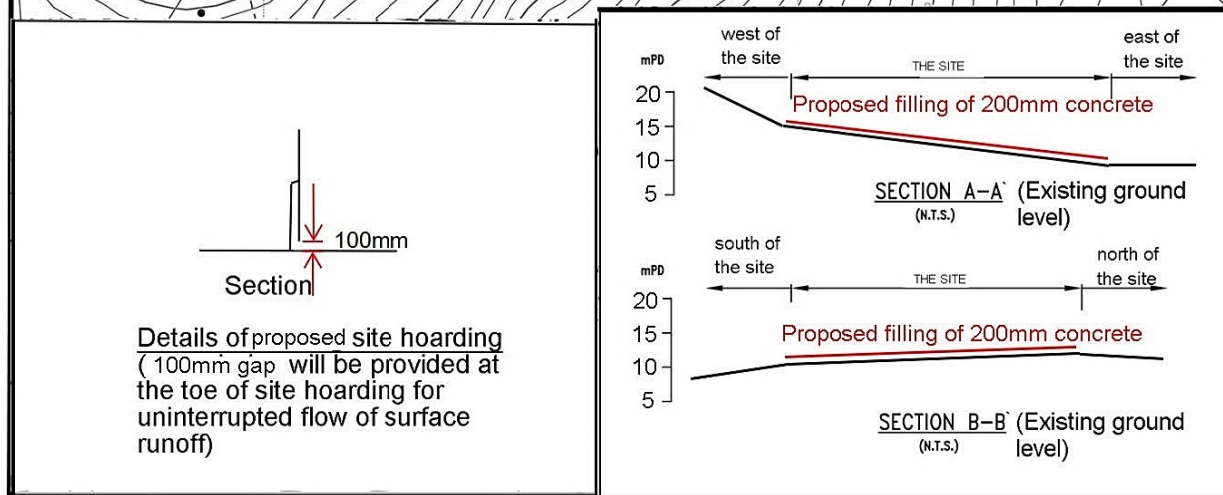
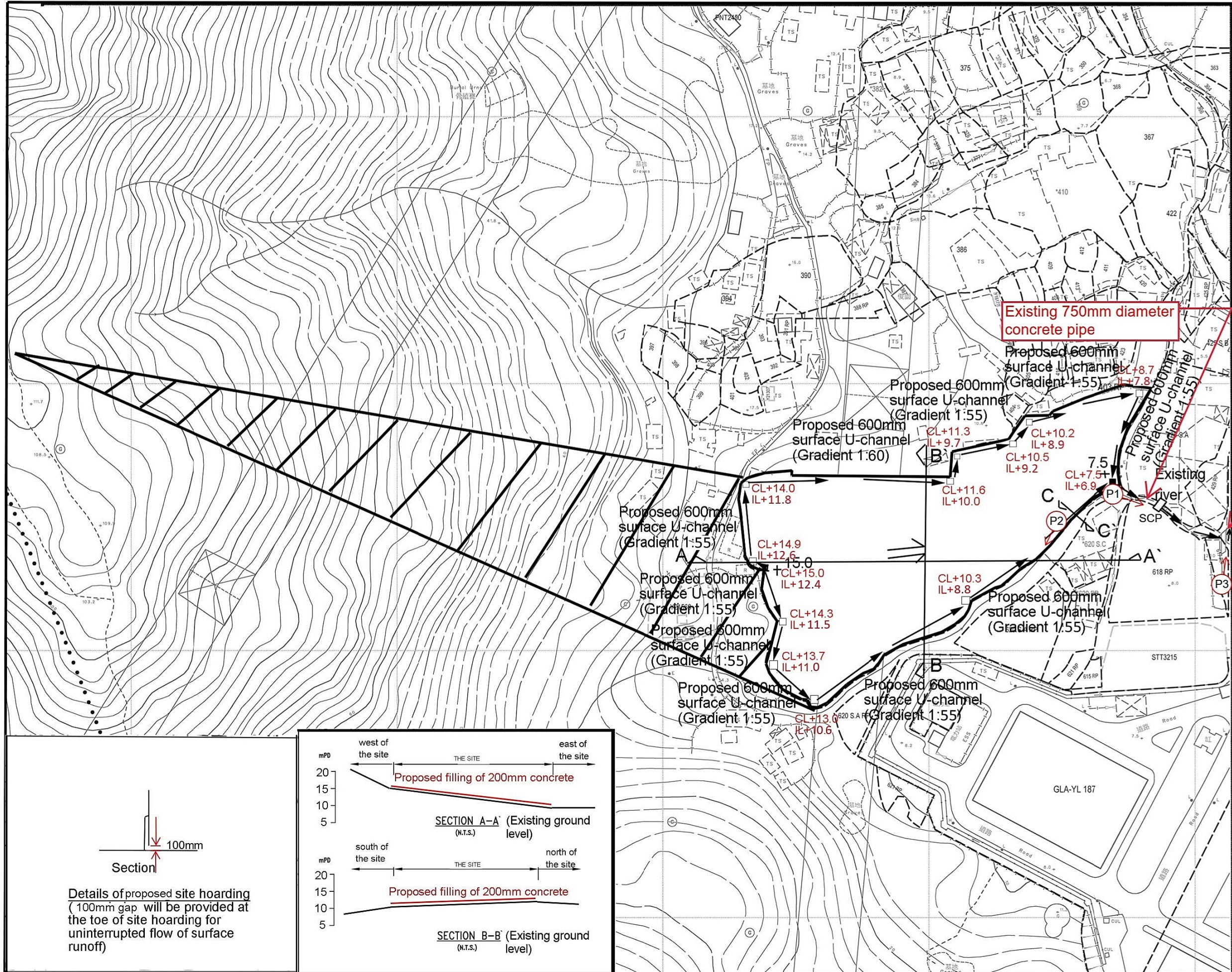
Proposed Drainage Plan

Scale

1:2000

Remarks

- P1 → photo view
- +7.5 level (in mPD)
- ← Flow of surface runoff
- Proposed catchpit
- Catchpit with sand trap
- ▨ External catchment



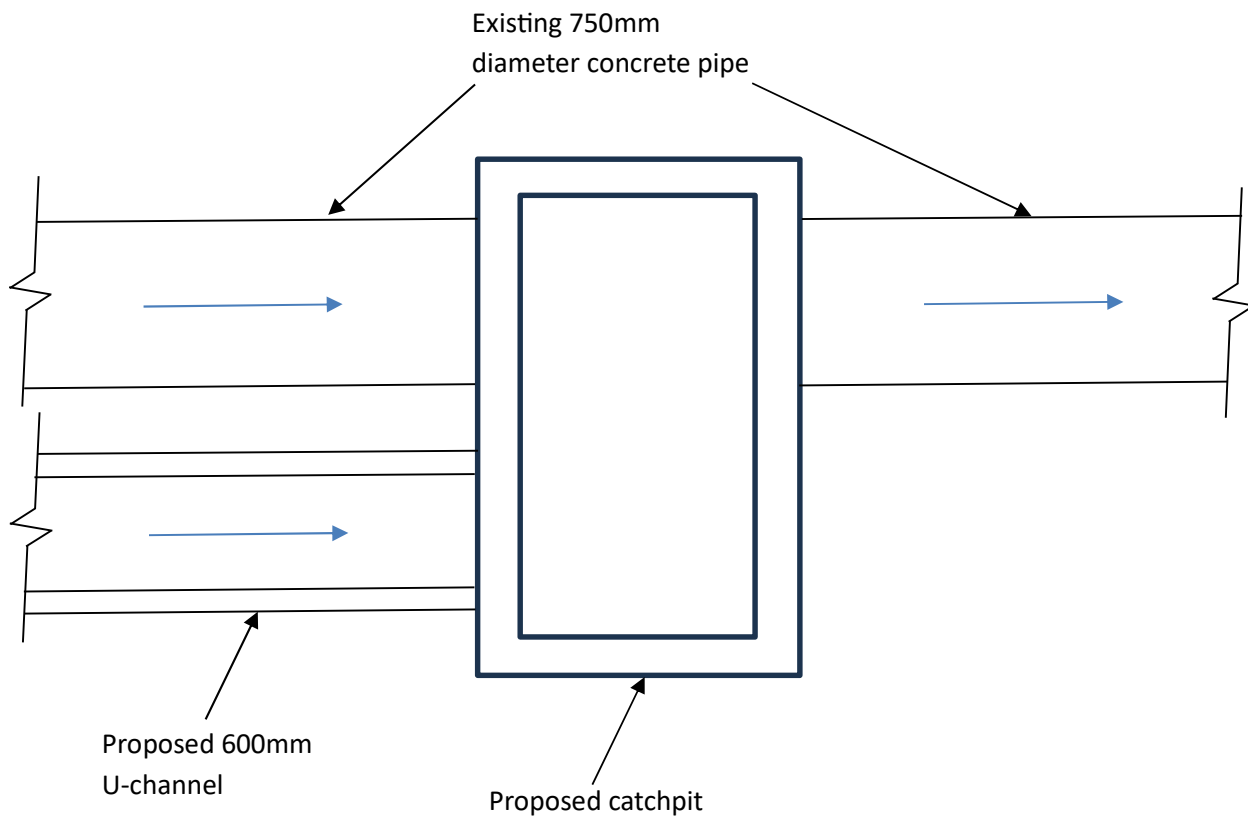
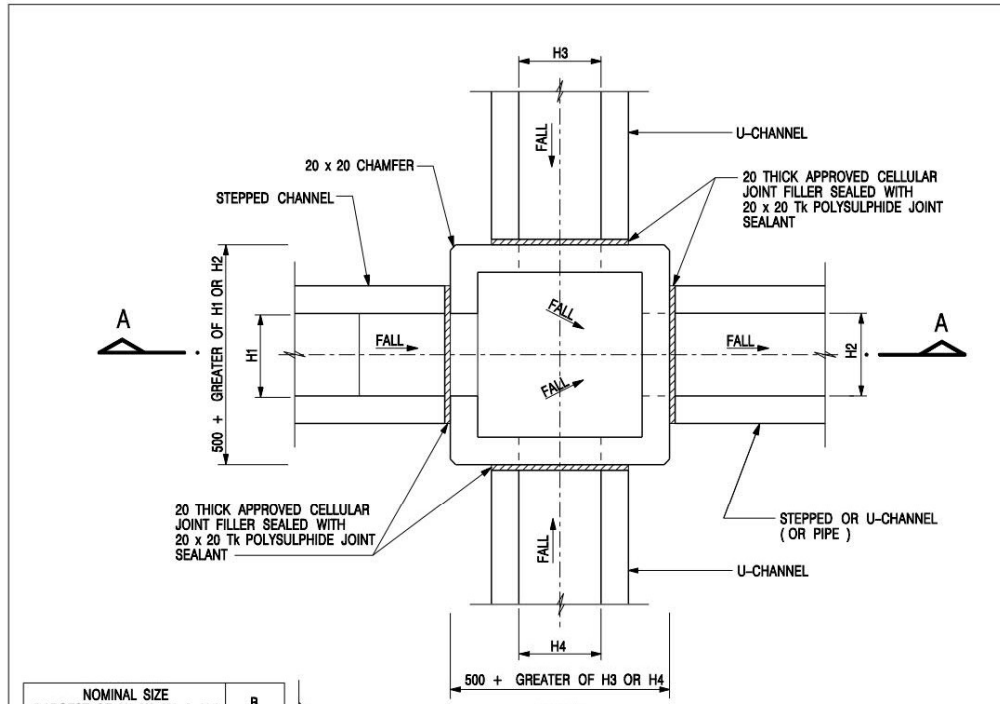
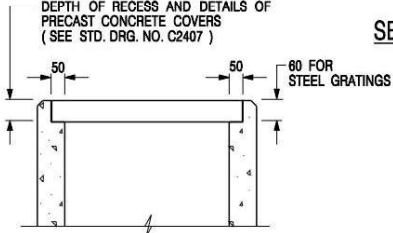
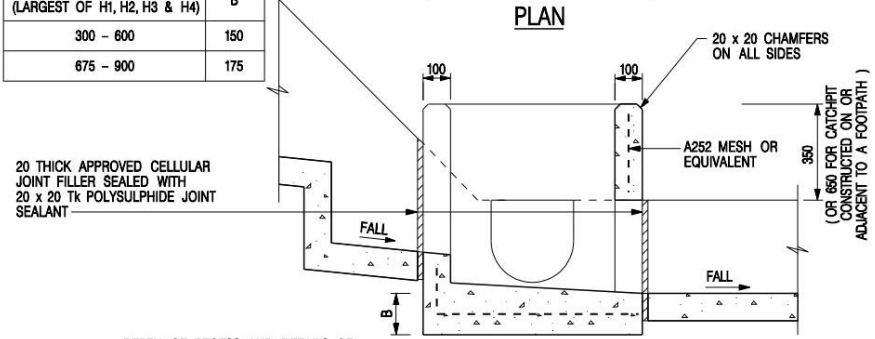


Figure 5 - Catchpit (SCP)



NOMINAL SIZE (LARGEST OF H1, H2, H3 & H4)	B
300 - 600	150
675 - 900	175



- NOTES:**
1. ALL DIMENSIONS ARE IN MILLIMETRES.
 2. REFER TO SHEET 5 FOR OTHER NOTES.

ALTERNATIVE TOP SECTION FOR
PRECAST CONCRETE COVERS / GRATINGS

STANDARD CATCHPIT DETAILS
(SHEET 1 OF 5)

-	FORMER DRG. NO. C2405J.	Original Signed	03.2015
REF.	REVISION	SIGNATURE	DATE



SCALE 1 : 20	DRAWING NO.
DATE JAN 1991	C2405 /1

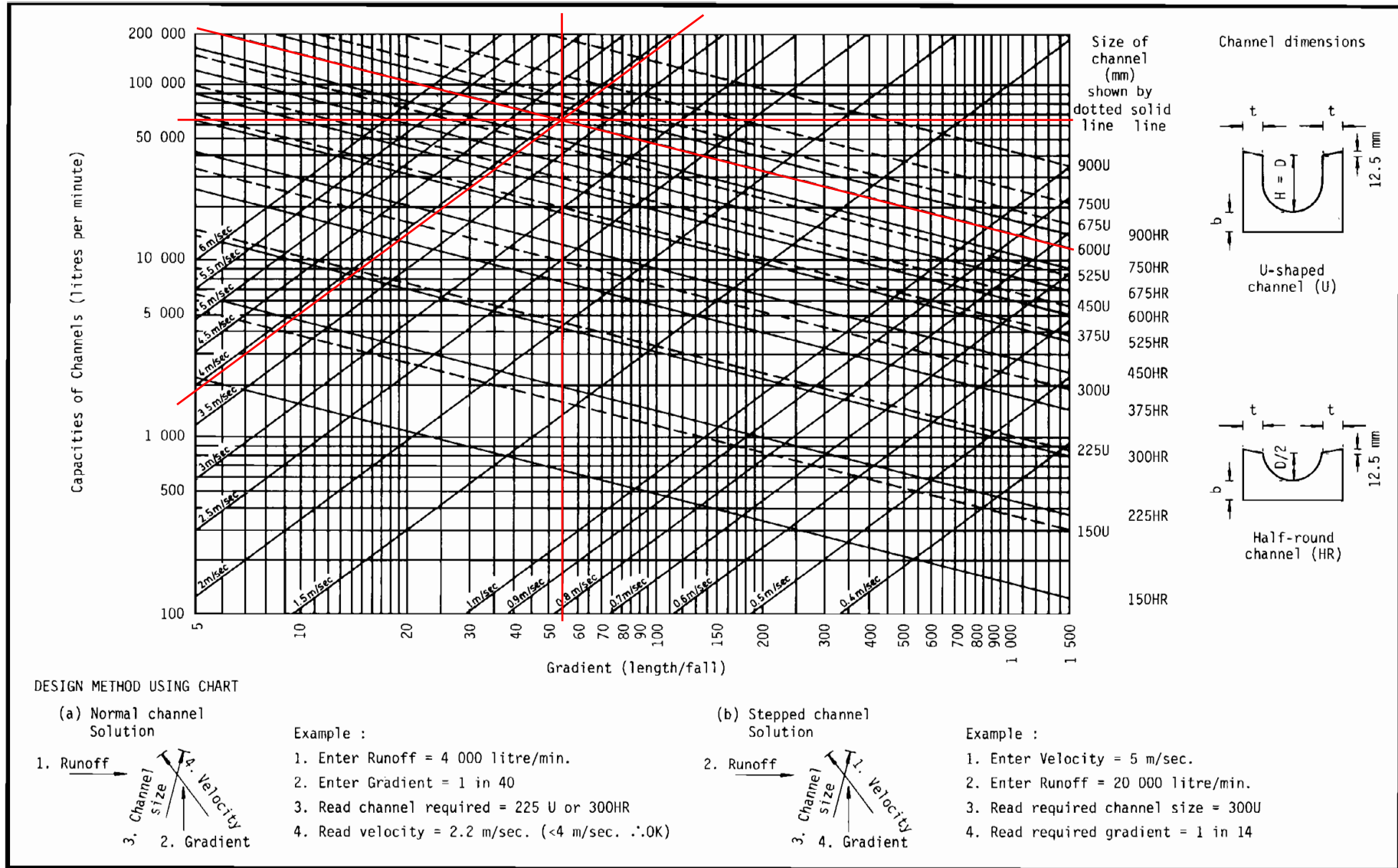


Figure 8.7 - Chart for the Rapid Design of Channels

F.S.NOTES:

1. GENERAL

- 1.1 FIRE SERVICE INSTALLATIONS SHALL BE PROVIDED IN ACCORDANCE WITH THE CODES OF PRACTICE FOR MINIMUM FIRE SERVICE INSTALLATIONS AND EQUIPMENT AND INSPECTION, TESTING AND MAINTENANCE OF INSTALLATIONS AND EQUIPMENT 2022 (COP 2022), FSD CIRCULAR LETTERS AND THE HONG KONG WATERWORKS STANDARD REQUIREMENTS.
- 1.2 ALL TUBES AND FITTINGS SHALL BE G.M.S. TO BS1387 MEDIUM GRADE WHERE PIPEWORK UP TO $\phi 150\text{mm}$.
- 1.3 ALL TUBES AND FITTINGS SHALL BE DUCTILE IRON TO BS EN545 K12 WHERE PIPEWORK ABOVE $\phi 150\text{mm}$.
- 1.4 ALL DRAIN PIPES SHALL BE DISCHARGED TO A CONSPICUOUS POSITION WITHOUT THE POSSIBILITY OF BEING SUBMERGED.
- 1.5 ALL PUDDLE FLANGES SHALL BE MADE OF DUCTILE IRON
- 1.6 SMOKE EXTRACTION SYSTEM(S) SHALL NOT BE PROVIDED AS THE AGGREGATE AREA OF OPERABLE WINDOW OF STRUCTURE 1 EXCEEDS 6.25% OF THE FLOOR AREA OF THE COMPARTMENT.
- 1.7 VENTILATION/AIR CONDITIONING SYSTEM NOT TO BE PROVIDED.

2. HOSE REEL SYSTEM

- 2.1 NEW FIRE HOSE REEL SHALL BE PROVIDED AS INDICATED ON PLAN TO ENSURE THAT EVERY PART OF THE BUILDING CAN BE REACHED BY A LENGTH OF NOT MORE THAN 30m HOSE REEL TUBING.
- 2.2 THE WATER SUPPLY FOR HOSE REEL SYSTEM WILL BE FED FROM A NEW 2m^3 F.S. FIBREGLASS WATER TANK VIA TWO HOSE REEL PUMPS (DUTY/STANDBY) LOCATED INSIDE FS PUMP ROOM AT EXTERNAL AREA.
- 2.3 HOSE REEL PUMPS SHALL BE STARTED BY ACTUATION OF ANY BREAKGLASS UNIT FITTED ASIDE EACH HOSE REEL SETS
- 2.4 ALL FIRE HOSE REEL OUTLETS SHOULD BE HOUSED IN GLASS FRONTED CABINET SECURED UNDER LOCK & KEY.
- 2.5 ALL FIRE HOSE REEL SHOULD BE PROVIDED WITH FSD APPROVED TYPE INSTRUCTION PLATE & WSD WARNING PLATE
- 2.6 SECONDARY ELECTRICITY SUPPLY DIRECTLY TEE OFF BEFORE CLP'S INCOMING MAIN SWITCH SHALL BE PROVIDED FOR THE FS PUMPS.

3. AUTOMATIC SPRINKLER SYSTEM

- 3.1 NEW AUTOMATIC SPRINKLER SYSTEM SHALL BE PROVIDED AND INSTALLED IN ACCORDANCE WITH LPC RULES FOR AUTOMATIC SPRINKLER INSTALLATIONS INCORPORATING BS EN 12845: 2015 (INCLUDING TECHNICAL BULLETINS, NOTES, COMMENTARY AND RECOMMENDATIONS) AND FSD CIRCULAR LETTER NO. 5/2020. THE CLASSIFICATION OF THE OCCUPANCIES WILL BE ORDINARY HAZARD GROUP III.
- 3.2 ONE NEW 135m^3 SPRINKLER WATER TANK WILL BE PROVIDED AS INDICATED ON PLAN. THE TOWN MAIN WATER SUPPLY WILL BE FED FROM SINGLE END.
- 3.3 TWO NEW SPRINKLER PUMPS (DUTY/STANDBY) AND ONE JOCKEY PUMP SHALL BE PROVIDED IN FS PUMP ROOM LOCATED AT EXTERNAL AREA.
- 3.4 NEW SPRINKLER CONTROL VALVE SET AND SPRINKLER INLET SHALL BE PROVIDED AS INDICATED ON PLAN.
- 3.5 A TEST VALVE SHALL BE PROVIDED FOR EACH ZONE OF SPRINKLER PIPE. THIS VALVE SHALL BE AT A CONSPICUOUS POSITION THAT WATER CAN BE DRAINED AWAY EASILY.
- 3.6 ALL SUBSIDIARY STOP VALVES TO BE ELECTRIC MONITORING TYPE.
- 3.7 ALL ELECTRIC TYPE VALVES SHOULD GIVE VISUAL SIGNALS TO FIRE SERVICE MAIN SUPERVISORY CONTROL PANEL TO INDICATE THE STATUS (OPEN/CLOSE) OF THE VALVES.
- 3.8 SECONDARY ELECTRICITY SUPPLY DIRECTLY TEE OFF BEFORE CLP'S INCOMING MAIN SWITCH SHALL BE PROVIDED FOR THE SPRINKLER PUMPS.
- 3.9 THE SPRINKLER SYSTEM DESIGN IS BASED ON THE FOLLOWINGS:
HAZARD CLASS : ORDINARY HAZARD GROUP III
TYPE OF STORAGE : POST-PALLET (ST2)
STORAGE CATEGORY : CATEGORY I
MAXIMUM STORAGE HEIGHT : 3.5m
SPRINKLER PROTECTION : CEILING PROTECTION ONLY
THE MAXIMUM STORAGE AREAS SHALL BE 50m^2 FOR SINGLE BLOCK
THE MINIMUM CLEARANCE AROUND EACH SINGLE STORAGE CLOCK : 2.4m

4. FIRE ALARM SYSTEM

- 4.1 NEW FIRE ALARM SYSTEM SHALL BE PROVIDED IN ACCORDANCE WITH BS 5839 PART 1: 2017 AND FSD CIRCULAR LETTERS 6/2021
- 4.2 NEW BREAKGLASS UNITS AND FIRE ALARM BELLS SHALL BE PROVIDED AT ALL NEW FIRE HOSE REEL POINTS. THE FIRE ALARM INTALLATION WILL BE INTEGRATED WITH THE HOSE REEL SYSTEM.

5. EMERGENCY LIGHTING

- 5.1 EMERGENCY LIGHTING SHALL BE PROVIDED IN ACCORDANCE WITH 'BS 5266-PART 1 :2016 AND BS EN 1838 :2013', FSD CIRCULAR LETTER 4/2021, COVERING ALL AREA. EMERGENCY LIGHTINGS SHALL BE BACKED UP BY BUILT-IN BATTERY AND CAPABLE OF MAINTAINING FUNCTION OF NOT LESS THAN 2 HOURS IN CASE OF POWER FAILURE

6. EXIT SIGN

- 6.1 ALL EXIT SIGNS/DIRECTIONAL EXIT SIGNS SHALL BE PROVIDED IN ACCORDANCE WITH 'BS 5266-PART 1 :2016 AND FSD CIRCULAR LETTER NO. 5/2008, FOR THE BUILDING. EXIT SIGNS/DIRECTIONAL EXIT SIGNS SHALL BE BACKED UP BY BUILT-IN BATTERY AND CAPABLE OF MAINTAINING FUNCTION OF NOT LESS THAN 2 HOURS IN CASE OF POWER FAILURE.

7. PORTABLE APPLIANCES

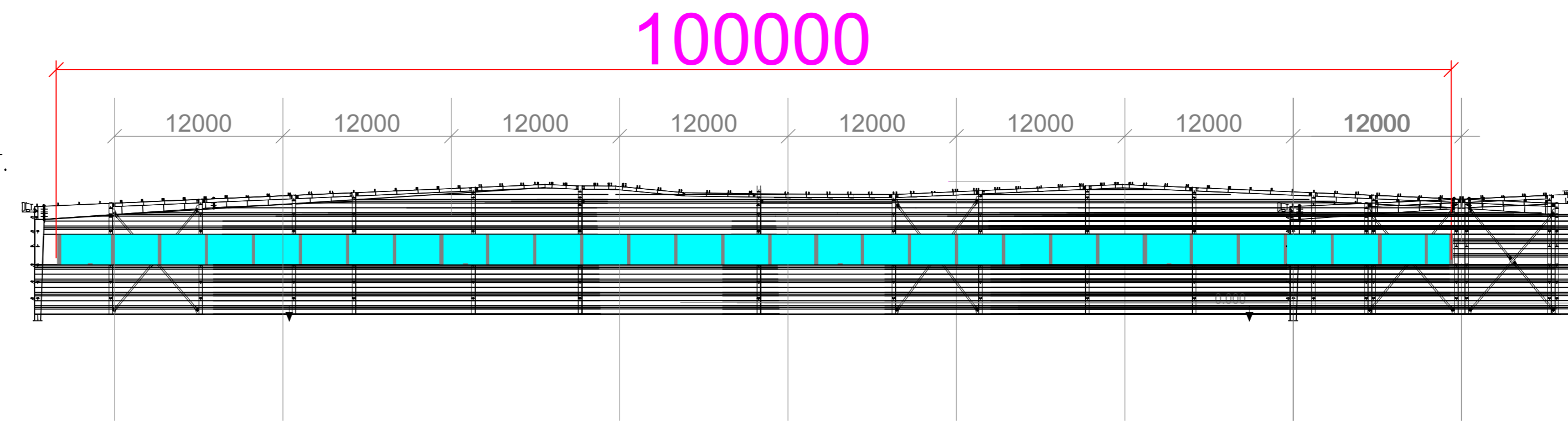
- 7.1 PORTABLE HAND OPERATED APPLIANCES SHALL BE PROVIDED AS INDICATED ON PLAN.

LEGEND

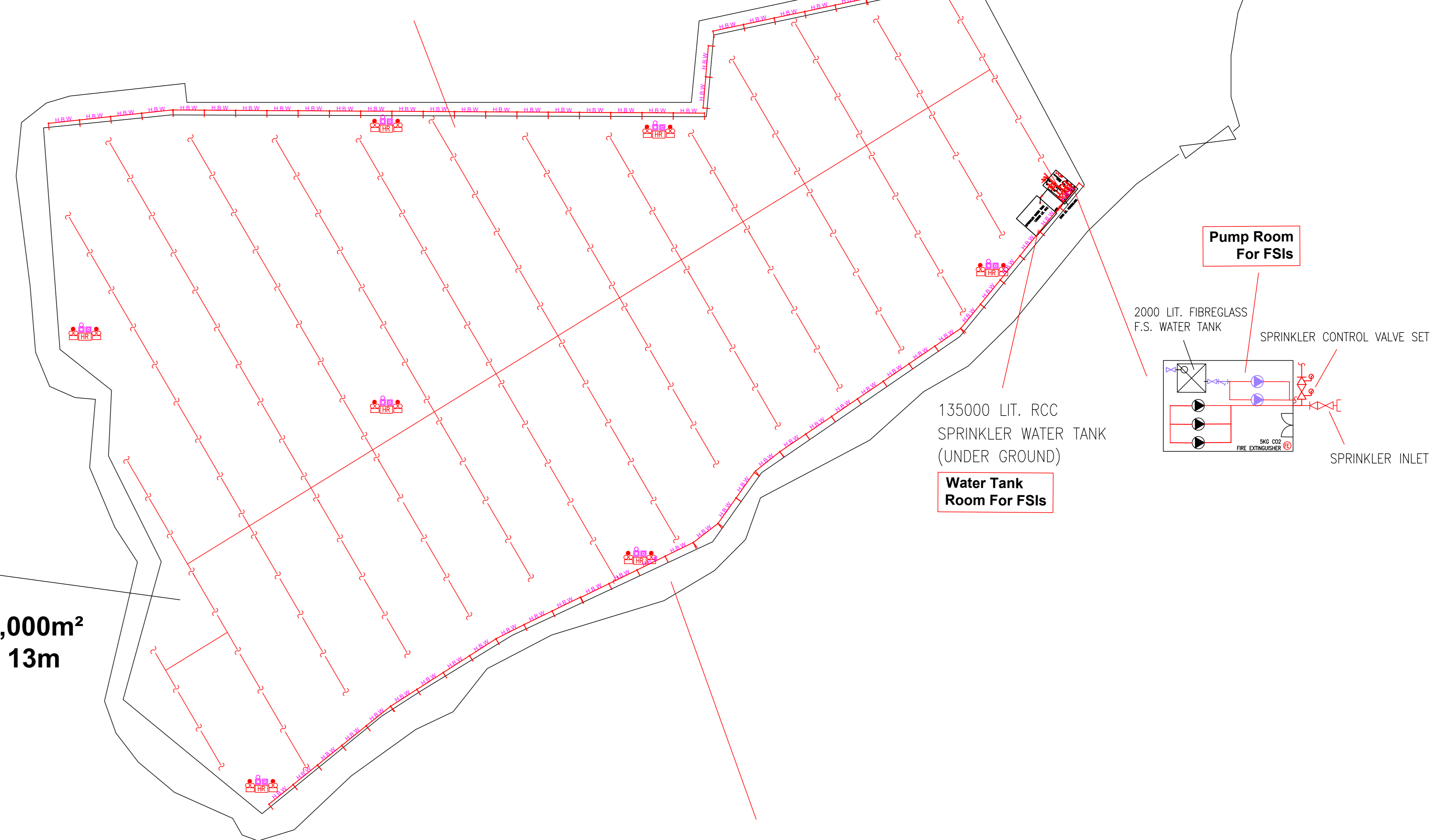
HOSE REEL	EMERGENCY LIGHT	5KG CO2 FIRE EXTINGUISHER	5KG DRY POWDER FIRE EXTINGUISHER
BREAK GLASS UNIT	EXIT SIGN	SPRINKLER CONTROL VALVE SET	SPRINKLER HEAD (ON PLAN)
FIRE ALARM BELL	SUBSIDIARY VALVE / FLOW SWITCH	SPRINKLER INLET	PUMP SET

Structure 1 Openable Windows Calculation

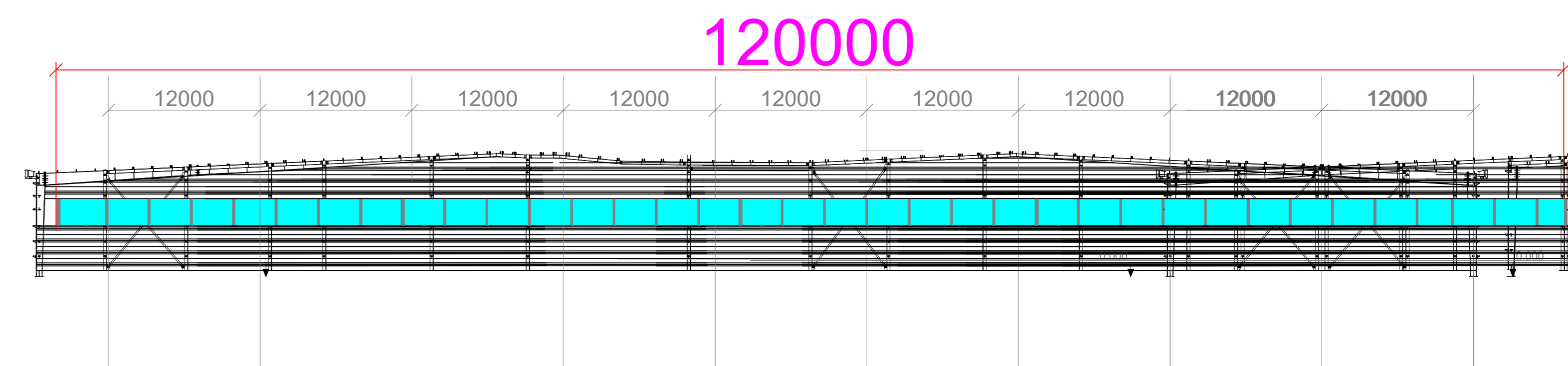
Area of GF Structure B1 = 7000sq.m.
Area of High Bay Window (H.B.W.) = 2m(H) x 220m = 440 sq.m.
Total openable window area = 440 sq.m.
= 6.28% of floor area



Section drawing of window opening for the structure (1) SCALE : 1 : 300 (A0)



Structure 1
Logistics centre
GFA: Not exceeding 7,000m²
Height: Not exceeding 13m
No. of story: 1



Section drawing of window opening for the structure (1) SCALE : 1 : 300 (A0)

Structure 2
Toilet
GFA: Not exceeding 20m²
Height: Not exceeding 3m
No. of story: 1

PROJECT : Proposed Temporary Logistics Centre for a Period of 3 Years and Filling of Land at Lot 403 RP (Part) in D.D. 103 & Adjoining Government Land, Kam Tin, Yuen Long, New Territories	DRAWING TITLE : F.S. Notes, Legend, Fire Service Installation Layout Plan	ARCHITECT :	CONSULTANT :	FIRE SERVICE CONTRACTOR : Century Fire Service Engineering Co., Ltd.	NAME C.K.NG	DATE 18 JUL 2024	DRAWING NO : FS-01	REV. 0
	REV	DESCRIPTION	DATE		DRAWN BY		SCALE : 1 : 300 (A0)	
					CHECKED BY		SOURCE : B.O.O. Ref. BD F.S.D. Ref. FP	
					APPROVED BY			

TREE GROUP INSPECTION REPORT FOR

LOT NO. 403RP (PART) IN D.D. 103

Ms. Lee Hiu Wa



ISA Certified Arborist (HK-1104A)

Tree Management Personnel

Registration Scheme

Arborist (TM522127)

Tree Risk Assessor (TM522127)

Tree Work Supervisor (TM522127)

Content

1. Introduction	P. 2
2. Methodology	P. 2
3. General Descriptions on Existing Trees	P. 3
4. Appendix A – Tree Location Plan	P. 5
5. Appendix B – General View	P. 6
6. Appendix C – Tree Survey Schedule	P. 8
7. Appendix D – Tree Photographic Records	P.16

1. Introduction

The land owner was instructed to perform tree inspection service so as to examine the target trees inside the Lot no. 403 RP (Part) in D.D. 103. This tree group inspection report describes the inspection methodology, the results, Arborist's recommendations and conclusion.

2. Methodology

An ISA Certified Arborist was assigned to conduct a tree inspection at the site on 23 May, 2024.

Thorough visual inspection of the trees was conducted by the Arborists from various vantage points on the ground to examine the subject trees. Within the designated site boundary, all living trees (in some case large tree-form shrubs) with a main trunk equal to or over 95 mm in Diameter at Breast Height (DBH) were included in the tree survey (AFCD Practice Note No. 2 / 2006). Each tree was allocated and tagged with a tree number, and its position was plotted on plans. They were then identified (1) to species, or in some cases to genus if full identification was not possible. Measurements were taken of its trunk diameter, height and spread, with a photograph taken. The report includes the following information on each tree surveyed:

- Tree No. (numbers allocated to individual trees);
- Tree Species Name (Scientific Name and Chinese Name);
- DBH at 1.3m above Ground level (mm);
- Crown spread (m);
- Overall Height (m);
- Amenity Value (High/Medium/Low);
- Form (Good/Fair/Poor);
- Health Condition (Good/Fair/Poor);
- Structural Condition (Good/Fair/Poor);
- Suitability for Transplanting (High/Medium/Low);
- Origin;
- Remarks (special features of particular trees)

3. General Descriptions on Existing Trees

There are 169 trees surveyed in site. For the composition of the surveyed trees, it is composed of 20 species. *Ficus hispida* (對葉榕) was the dominant species with the quantities of 57. More information is shown in the Table 3.1.

Table 3.1: Individual Surveyed Trees Species & Quantities

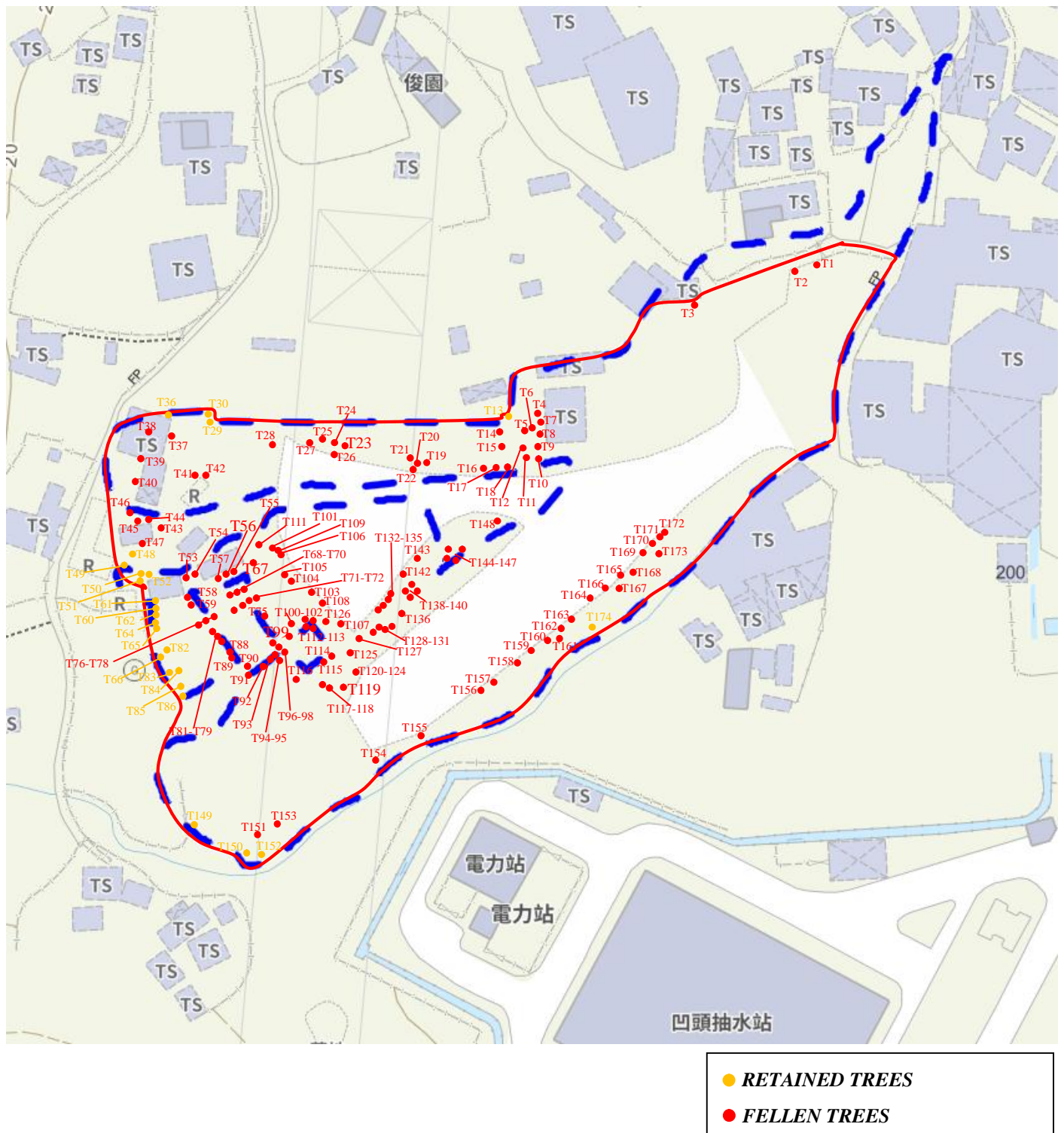
Scientific Name	Recommendation	Conservation Status	Quantities
<i>Acacia confusa</i>	Fell	-	5
<i>Aporosa dioica</i>	Fell	-	1
<i>Artocarpus heterophyllus</i>	Fell	-	2
<i>Bischofia javanica</i>	Fell	-	1
<i>Bridelia tomentosa</i>	Fell	-	2
<i>Celtis sinensis</i>	Retain	-	3
<i>Celtis sinensis</i>	Fell	-	2
<i>Citrus maxima</i>	Retain	-	3
<i>Citrus maxima</i>	Fell	-	9
<i>Clausena lansium</i>	Retain	-	1
<i>Dimocarpus longan</i>	Retain	-	1
<i>Dimocarpus longan</i>	Fell	-	4
<i>Ficus hispida</i>	Retain	-	6
<i>Ficus hispida</i>	Fell	-	51
<i>Ficus variegata</i>	Fell	-	1
<i>Leucaena leucocephala</i>	Fell	-	18
<i>Ligustrum sinense</i>	Retain	-	2
<i>Ligustrum sinense</i>	Fell	-	3
<i>Litchi chinensis</i>	Retain	-	1
<i>Litchi chinensis</i>	Fell	-	1
<i>Litsea glutinosa</i>	Fell	-	1
<i>Litsea monopetala</i>	Retain	-	1
<i>Litsea monopetala</i>	Fell	-	9
<i>Macaranga tanarius</i> var. <i>tomentosa</i>	Retain	-	6
<i>Macaranga tanarius</i> var. <i>tomentosa</i>	Fell	-	31
<i>Melia azedarach</i>	Fell	-	1

<i>Microcos nervosa</i>	Fell	-	1
<i>Morus alba</i>	Fell	-	2
Total Quantity of Surveyed Trees:			169

Review the proposed layout plan, the site would be fully occupied by proposed structure. There is not adequate space for health growth of the compensatory trees to their mature size. However there are 24 trees would be retained in order to maintain the landscape quality of the surrounding area.

Please refer to Appendix A for Tree Location Plan, Appendix B for General View, Appendix C for Tree Survey Schedule and Appendix D for Tree Photographic Records.

Appendix A-Site Plan



Appendix B – General View





Appendix C – Tree Survey Schedule

Location: Lot no. 403 in D.D. 103

Date of Inspection: 2024/05/23

Surveyed by: LEE HIU WA

Tree No.	Tree Species		Tree Size Measurement			Amenity Value (High / Medium /Low)	Form (Good/ Fair/ Poor)	Health Condition (Good / Fair / Poor /Dead)	Structural Condition (Good/ Fair/ Poor)	Suitability for Transplanting	Origin	Remarks
	Scientific Name	Chinese Name	DBH(mm)	Overall Height (m)	Crown Spread (m)					(High/ Medium/ Low)		
T1	<i>Artocarpus heterophyllus</i>	菠蘿蜜	375	9	6	Low	Fair	Fair	Fair	Low	Exotic	wound (trunk) dieback
T2	<i>Artocarpus heterophyllus</i>	菠蘿蜜	280	8	7	Low	Fair	Fair	Fair	Low	Exotic	root restriction, dieback
T3	<i>Litchi chinensis</i>	荔枝	265	5	4	Low	Fair	Fair	Fair	Low	Exotic	dead twigs
T4	<i>Leucaena leucocephala</i>	銀合歡	219	7	3	Low	Fair	Fair	Fair	Low	Exotic	bent (trunk)
T5	<i>Leucaena leucocephala</i>	銀合歡	155	6	3	Low	Fair	Fair	Fair	Low	Exotic	bent (trunk)
T6	<i>Leucaena leucocephala</i>	銀合歡	131	7	4	Low	Fair	Fair	Fair	Low	Exotic	cross-trunk
T7	<i>Leucaena leucocephala</i>	銀合歡	109	6	2	Low	Fair	Fair	Fair	Low	Exotic	cross-trunk
T8	<i>Leucaena leucocephala</i>	銀合歡	141	6	5	Low	Fair	Fair	Fair	Low	Exotic	cross-trunk , lean, wound (trunk)
T9	<i>Leucaena leucocephala</i>	銀合歡	97	5	3	Low	Fair	Fair	Fair	Low	Exotic	lean
T10	<i>Leucaena leucocephala</i>	銀合歡	194	7	5	Low	Fair	Fair	Fair	Low	Exotic	lean, wound (trunk)
T11	<i>Macaranga tanarius</i> var. tomentosa	血桐	159	5	5	Low	Fair	Fair	Fair	Low	Native	lean
T12	<i>Macaranga tanarius</i> var. tomentosa	血桐	171	4	5	Low	Fair	Fair	Fair	Low	Native	normal
T13	<i>Litchi chinensis</i>	荔枝	221	5	5	Low	Fair	Fair	Fair	Low	Exotic	normal
T14	<i>Dimocarpus longan</i>	龍眼	191	4	3	Low	Fair	Fair	Fair	Low	Exotic	normal
T15	<i>Ficus variegata</i>	青果榕	276	5	5	Low	Fair	Fair	Fair	Low	Native	vine
T16	<i>Leucaena leucocephala</i>	銀合歡	94	5	5	Low	Fair	Fair	Fair	Low	Exotic	lean
T17	<i>Leucaena leucocephala</i>	銀合歡	208	8	6	Low	Fair	Fair	Fair	Low	Exotic	lean
T18	<i>Leucaena leucocephala</i>	銀合歡	165	8	4	Low	Fair	Fair	Fair	Low	Exotic	lean
T19	<i>Macaranga tanarius</i> var. tomentosa	血桐	210	6	6	Low	Fair	Fair	Fair	Low	Native	lean
T20	<i>Ficus hispida</i>	對葉榕	254	7	6	Low	Fair	Fair	Fair	Low	Native	dead branch, vine
T21	<i>Ficus hispida</i>	對葉榕	224	6	7	Low	Fair	Fair	Fair	Low	Native	vine
T22	<i>Macaranga tanarius</i> var. tomentosa	血桐	112	4	2	Low	Fair	Fair	Fair	Low	Native	lean

Appendix C – Tree Survey Schedule

Location: Lot no. 403 in D.D. 103

Date of Inspection: 2024/05/23

Surveyed by: LEE HIU WA

Tree No.	Tree Species		Tree Size Measurement			Amenity Value (High / Medium /Low)	Form (Good/ Fair/ Poor)	Health Condition (Good / Fair / Poor /Dead)	Structural Condition (Good/ Fair/ Poor)	Suitability for Transplanting	Origin	Remarks
	Scientific Name	Chinese Name	DBH(mm)	Overall Height (m)	Crown Spread (m)					(High/ Medium/ Low)		
T23	<i>Litsea monopetala</i>	假柿樹	383	10	6	Low	Fair	Fair	Fair	Low	Native	cavity
T24	<i>Macaranga tanarius</i> var. <i>tomentosa</i>	血桐	109	3	3	Low	Fair	Fair	Fair	Low	Native	lean
T25	<i>Macaranga tanarius</i> var. <i>tomentosa</i>	血桐	107	5	4	Low	Fair	Fair	Fair	Low	Native	lean
T26	<i>Macaranga tanarius</i> var. <i>tomentosa</i>	血桐	178	6	4	Low	Fair	Fair	Fair	Low	Native	lean
T27	<i>Macaranga tanarius</i> var. <i>tomentosa</i>	血桐	163	5	3	Low	Fair	Fair	Fair	Low	Native	normal
T28	<i>Macaranga tanarius</i> var. <i>tomentosa</i>	血桐	94	6	4	Low	Fair	Fair	Fair	Low	Native	normal
T29	<i>Macaranga tanarius</i> var. <i>tomentosa</i>	血桐	101	6	4	Low	Fair	Fair	Fair	Low	Native	lean
T30	<i>Macaranga tanarius</i> var. <i>tomentosa</i>	血桐	90	6	3	Low	Fair	Fair	Fair	Low	Native	lean
T31	<i>Litsea monopetala</i>	假柿樹	229	8	3	Low	Fair	Fair	Fair	Low	Native	normal
T32	<i>Ficus hispida</i>	對葉榕	374	5	7	Low	Fair	Fair	Fair	Low	Native	multi-trunks
T33	<i>Ficus hispida</i>	對葉榕	198	7	4	Low	Fair	Fair	Fair	Low	Native	multi-trunks
T34	<i>Ficus hispida</i>	對葉榕	255	7	6	Low	Fair	Fair	Fair	Low	Native	multi-trunks
T35	<i>Macaranga tanarius</i> var. <i>tomentosa</i>	血桐	176	6	6	Low	Fair	Fair	Fair	Low	Native	codominant trunks
T36	<i>Macaranga tanarius</i> var. <i>tomentosa</i>	血桐	116	6	4	Low	Fair	Fair	Fair	Low	Native	bent (trunk)
T37	<i>Macaranga tanarius</i> var. <i>tomentosa</i>	血桐	118	8	4	Low	Fair	Fair	Fair	Low	Native	fallen
T38	<i>Litsea monopetala</i>	假柿樹	176	5	4	Low	Fair	Fair	Fair	Low	Native	roots restriction
T39	<i>Ficus hispida</i>	對葉榕	106	6	4	Low	Fair	Fair	Fair	Low	Native	roots restriction
T40	<i>Macaranga tanarius</i> var. <i>tomentosa</i>	血桐	202	5	5	Low	Fair	Fair	Fair	Low	Native	roots restriction
T41	<i>Macaranga tanarius</i> var. <i>tomentosa</i>	血桐	90	5	2	Low	Fair	Fair	Fair	Low	Native	roots restriction
T42	<i>Macaranga tanarius</i> var. <i>tomentosa</i>	血桐	173	5	5	Low	Fair	Fair	Fair	Low	Native	roots restriction
T43	<i>Melia azedarach</i>	苦楝	146	8	5	Low	Fair	Fair	Fair	Low	Exotic	normal
T44	<i>Celtis sinensis</i>	朴樹	127	7	4	Low	Fair	Fair	Fair	Low	Native	dieback

Appendix C – Tree Survey Schedule

Location: Lot no. 403 in D.D. 103

Date of Inspection: 2024/05/23

Surveyed by: LEE HIU WA

Tree No.	Tree Species		Tree Size Measurement			Amenity Value (High / Medium /Low)	Form (Good/ Fair/ Poor)	Health Condition (Good / Fair / Poor /Dead)	Structural Condition (Good/ Fair/ Poor)	Suitability for Transplanting	Origin	Remarks
	Scientific Name	Chinese Name	DBH(mm)	Overall Height (m)	Crown Spread (m)					(High/ Medium/ Low)		
T45	<i>Ficus hispida</i>	對葉榕	159	5	5	Low	Fair	Fair	Fair	Low	Native	root restrictiton
T46	<i>Ficus hispida</i>	對葉榕	109	5	3	Low	Fair	Fair	Fair	Low	Native	root restrictiton
T47	<i>Macaranga tanarius</i> var. <i>tomentosa</i>	血桐	173	6	5	Low	Fair	Fair	Fair	Low	Native	codominant trunks, vine, root restriction
T48	<i>Macaranga tanarius</i> var. <i>tomentosa</i>	血桐	79	5	4	Low	Fair	Fair	Fair	Low	Native	lean
T49	<i>Clausena lansium</i>	黃皮	210	4	6	Low	Fair	Fair	Fair	Low	Exotic	root cavity, root restriction
T50	<i>Celtis sinensis</i>	朴樹	94	6	4	Low	Fair	Fair	Fair	Low	Native	vine
T51	<i>Celtis sinensis</i>	朴樹	103	4	3	Low	Fair	Fair	Fair	Low	Native	wound, root restriction
T52	<i>Ficus hispida</i>	對葉榕	174	4	4	Low	Fair	Fair	Fair	Low	Native	root restriction, vine, wound (trunk)
T53	<i>Litsea monopetala</i>	假柿樹	233	8	4	Low	Fair	Fair	Fair	Low	Native	root restriction, vine
T54	<i>Microcos paniculata</i> / <i>Microcos nervosa</i>	破布葉	180	6	6	Low	Fair	Fair	Fair	Low	Native	multi-trunks
T55	<i>Ligustrum sinense</i>	山指甲	128	6	3	Low	Fair	Fair	Fair	Low	Exotic	multi-trunks
T56	<i>Ligustrum sinense</i>	山指甲	83	6	2	Low	Fair	Fair	Fair	Low	Exotic	multi-trunks
T57	<i>Macaranga tanarius</i> var. <i>tomentosa</i>	血桐	85	6	4	Low	Fair	Fair	Fair	Low	Native	sparse
T58	<i>Litsea monopetala</i>	假柿樹	136	8	4	Low	Fair	Fair	Fair	Low	Native	signs of pests
T59	<i>Citrus maxima</i>	柚	152	4	6	Low	Fair	Fair	Fair	Low	Exotic	multi-trunks, signs of pests
T60	<i>Celtis sinensis</i>	朴樹	123	6	2	Low	Fair	Fair	Fair	Low	Native	wound (trunk)
T61	<i>Ligustrum sinense</i>	山指甲	62	3	4	Low	Fair	Fair	Fair	Low	Exotic	multi-trunks
T62	<i>Ligustrum sinense</i>	山指甲	78	3	5	Low	Fair	Fair	Fair	Low	Exotic	normal, multi-trunks
T63	<i>Ficus hispida</i>	對葉榕	195	6	5	Low	Fair	Fair	Fair	Low	Native	normal
T64	<i>Citrus maxima</i>	柚	156	7	6	Low	Fair	Fair	Fair	Low	Exotic	multi-trunks
T65	<i>Ficus hispida</i>	對葉榕	94	7	3	Low	Fair	Fair	Fair	Low	Native	normal
T66	<i>Litsea monopetala</i>	假柿樹	159	8	4	Low	Fair	Fair	Fair	Low	Native	normal

Appendix C – Tree Survey Schedule

Location: Lot no. 403 in D.D. 103

Date of Inspection: 2024/05/23

Surveyed by: LEE HIU WA

Tree No.	Tree Species		Tree Size Measurement			Amenity Value (High / Medium /Low)	Form (Good/ Fair/ Poor)	Health Condition (Good / Fair / Poor /Dead)	Structural Condition (Good/ Fair/ Poor)	Suitability for Transplanting	Origin	Remarks
	Scientific Name	Chinese Name	DBH(mm)	Overall Height (m)	Crown Spread (m)					(High/ Medium/ Low)		
T67	<i>Litsea glutinosa</i>	潺槁樹	107	6	3	Low	Fair	Fair	Fair	Low	Native	normal
T68	<i>Ficus hispida</i>	對葉榕	144	6	6	Low	Fair	Fair	Fair	Low	Native	wound (trunk)
T69	<i>Citrus maxima</i>	柚	127	4	4	Low	Fair	Fair	Fair	Low	Exotic	sparse
T70	<i>Ficus hispida</i>	對葉榕	91	6	4	Low	Fair	Fair	Fair	Low	Native	multi-trunks
T71	<i>Ficus hispida</i>	對葉榕	160	6	5	Low	Fair	Fair	Fair	Low	Native	root restriction
T72	<i>Citrus maxima</i>	柚	133	5	6	Low	Fair	Fair	Fair	Low	Exotic	root restriction
T73	<i>Macaranga tanarius</i> var. tomentosa	血桐	96	6	3	Low	Fair	Fair	Fair	Low	Native	wound (trunk)
T74	<i>Macaranga tanarius</i> var. tomentosa	血桐	89	5	3	Low	Fair	Fair	Fair	Low	Native	dead tree
T75	<i>Ficus hispida</i>	對葉榕	154	4	7	Low	Fair	Fair	Fair	Low	Native	multi-trunks
T76	<i>Citrus maxima</i>	柚	104	5	4	Low	Fair	Fair	Fair	Low	Exotic	sparse
T77	<i>Ficus hispida</i>	對葉榕	208	6	6	Low	Fair	Fair	Fair	Low	Native	root restriction
T78	<i>Ficus hispida</i>	對葉榕	103	6	3	Low	Fair	Fair	Fair	Low	Native	root restriction
T79	<i>Ficus hispida</i>	對葉榕	135	6	5	Low	Fair	Fair	Fair	Low	Native	wound (trunk)
T80	<i>Citrus maxima</i>	柚	160	4	7	Low	Fair	Fair	Fair	Low	Exotic	multi-trunks
T81	<i>Macaranga tanarius</i> var. tomentosa	血桐	150	7	4	Low	Fair	Fair	Fair	Low	Native	lean
T82	<i>Citrus maxima</i>	柚	119	4	4	Low	Fair	Fair	Fair	Low	Exotic	vine
T83	<i>Citrus maxima</i>	柚	131	5	6	Low	Fair	Fair	Fair	Low	Exotic	normal
T84	<i>Ficus hispida</i>	對葉榕	114	6	4	Low	Fair	Fair	Fair	Low	Native	normal
T85	<i>Ficus hispida</i>	對葉榕	180	6	6	Low	Fair	Fair	Fair	Low	Native	lean
T86	<i>Macaranga tanarius</i> var. tomentosa	血桐	104	7	4	Low	Fair	Fair	Fair	Low	Native	normal
T87	<i>Litsea monopetala</i>	假柿樹	99	8	2	Low	Fair	Fair	Fair	Low	Native	codominant trunks, root restriction
T88	<i>Ficus hispida</i>	對葉榕	234	7	5	Low	Fair	Fair	Fair	Low	Native	root restriction

Appendix C – Tree Survey Schedule

Location: Lot no. 403 in D.D. 103

Date of Inspection: 2024/05/23

Surveyed by: LEE HIU WA

Tree No.	Tree Species		Tree Size Measurement			Amenity Value (High / Medium /Low)	Form (Good/ Fair/ Poor)	Health Condition (Good / Fair / Poor /Dead)	Structural Condition (Good/ Fair/ Poor)	Suitability for Transplanting	Origin	Remarks
	Scientific Name	Chinese Name	DBH(mm)	Overall Height (m)	Crown Spread (m)					(High/ Medium/ Low)		
T89	<i>Ficus hispida</i>	對葉榕	195	7	8	Low	Fair	Fair	Fair	Low	Native	root restriction
T90	<i>Ficus hispida</i>	對葉榕	107	8	3	Low	Fair	Fair	Fair	Low	Native	normal
T91	<i>Citrus maxima</i>	柚	191	5	6	Low	Fair	Fair	Fair	Low	Exotic	spares
T92	<i>Ficus hispida</i>	對葉榕	257	7	6	Low	Fair	Fair	Fair	Low	Native	multi-trunks, wound (trunk)
T93	<i>Ficus hispida</i>	對葉榕	202	7	5	Low	Fair	Fair	Fair	Low	Native	spares
T94	<i>Ficus hispida</i>	對葉榕	123	7	5	Low	Fair	Fair	Fair	Low	Native	wound(trunk)
T95	<i>Citrus maxima</i>	柚	161	6	7	Low	Fair	Fair	Fair	Low	Exotic	spares
T96	<i>Ficus hispida</i>	對葉榕	97	6	3	Low	Fair	Fair	Fair	Low	Native	ben(trunk), sparse
T97	<i>Ficus hispida</i>	對葉榕	102	7	3	Low	Fair	Fair	Fair	Low	Native	normal
T98	<i>Ficus hispida</i>	對葉榕	159	7	4	Low	Fair	Fair	Fair	Low	Native	normal
T99	<i>Ficus hispida</i>	對葉榕	183	5	7	Low	Fair	Fair	Fair	Low	Native	dead branch
T100	<i>Ligustrum sinense</i>	山指甲	149	6	4	Low	Fair	Fair	Fair	Low	Exotic	multi-trunks
T101	<i>Ficus hispida</i>	對葉榕	93	5	5	Low	Fair	Fair	Fair	Low	Native	normal
T102	<i>Ficus hispida</i>	對葉榕	225	6	6	Low	Fair	Fair	Fair	Low	Native	vine
T103	<i>Ficus hispida</i>	對葉榕	187	5	6	Low	Fair	Fair	Fair	Low	Native	vine
T104	<i>Morus alba</i>	桑	129	5	5	Low	Fair	Fair	Fair	Low	Native	pressed
T105	<i>Ficus hispida</i>	對葉榕	140	4	5	Low	Fair	Fair	Fair	Low	Native	lean
T106	<i>Celtis sinensis</i>	朴樹	116	6	2	Low	Fair	Fair	Fair	Low	Native	normal
T107	<i>Leucaena leucocephala</i>	銀合歡	183	8	6	Low	Fair	Fair	Fair	Low	Exotic	normal
T108	<i>Leucaena leucocephala</i>	銀合歡	110	7	6	Low	Fair	Fair	Fair	Low	Exotic	lean
T109	<i>Ficus hispida</i>	對葉榕	173	4	7	Low	Fair	Fair	Fair	Low	Native	codominant trunks
T110	<i>Ficus hispida</i>	對葉榕	110	4	3	Low	Fair	Fair	Fair	Low	Native	root restriction

Appendix C – Tree Survey Schedule

Location: Lot no. 403 in D.D. 103

Date of Inspection: 2024/05/23

Surveyed by: LEE HIU WA

Tree No.	Tree Species		Tree Size Measurement			Amenity Value (High / Medium /Low)	Form (Good/ Fair/ Poor)	Health Condition (Good / Fair / Poor /Dead)	Structural Condition (Good/ Fair/ Poor)	Suitability for Transplanting	Origin	Remarks
	Scientific Name	Chinese Name	DBH(mm)	Overall Height (m)	Crown Spread (m)					(High/ Medium/ Low)		
T111	<i>Macaranga tanarius</i> var. tomentosa	血桐	170	5	6	Low	Fair	Fair	Fair	Low	Native	root restriction, lean
T112	<i>Ficus hispida</i>	對葉榕	200	7	8	Low	Fair	Fair	Fair	Low	Native	normal
T113	<i>Bridelia tomentosa</i>	土蜜樹	94	7	3	Low	Fair	Fair	Fair	Low	Native	cross trunk
T114	<i>Macaranga tanarius</i> var. tomentosa	血桐	160	6	4	Low	Fair	Fair	Fair	Low	Native	multi-trunks
T115	<i>Citrus maxima</i>	柚	123	5	6	Low	Fair	Fair	Fair	Low	Exotic	multi-trunks
T116	<i>Ficus hispida</i>	對葉榕	174	5	6	Low	Fair	Fair	Fair	Low	Native	topping, wound
T117	<i>Ficus hispida</i>	對葉榕	174	5	6	Low	Fair	Fair	Fair	Low	Native	lean
T118	<i>Ficus hispida</i>	對葉榕	119	6	3	Low	Fair	Fair	Fair	Low	Native	lean
T119	<i>Citrus maxima</i>	柚	237	5	5	Low	Fair	Fair	Fair	Low	Exotic	normal
T120	<i>Ficus hispida</i>	對葉榕	163	5	6	Low	Poor	Fair	Fair	Low	Native	lean, cavity
T121	<i>Ficus hispida</i>	對葉榕	125	4	4	Low	Fair	Fair	Fair	Low	Native	lean
T122	<i>Ficus hispida</i>	對葉榕	127	5	5	Low	Fair	Fair	Fair	Low	Native	lean
T123	<i>Ficus hispida</i>	對葉榕	90	4	2	Low	Fair	Fair	Fair	Low	Native	lean
T124	<i>Ficus hispida</i>	對葉榕	127	4	4	Low	Fair	Fair	Fair	Low	Native	codominant trunks
T125	<i>Morus alba</i>	桑	102	5	5	Low	Fair	Fair	Fair	Low	Native	multi-trunks
T126	<i>Leucaena leucocephala</i>	銀合歡	85	6	4	Low	Fair	Fair	Fair	Low	Exotic	lean
T127	<i>Dimocarpus longan</i>	龍眼	222	7	5	Low	Fair	Fair	Fair	Low	Exotic	normal
T128	<i>Litsea monopetala</i>	假柿樹	322	8	4	Low	Fair	Fair	Fair	Low	Native	vine, break branch
T129	<i>Bridelia tomentosa</i>	土蜜樹	125	6	6	Low	Fair	Fair	Fair	Low	Native	dead twigs
T130	<i>Ficus hispida</i>	對葉榕	115	6	4	Low	Fair	Fair	Fair	Low	Native	codominant trunks
T136	<i>Macaranga tanarius</i> var. tomentosa	血桐	94	5	4	Low	Fair	Fair	Fair	Low	Native	lean
T137	<i>Acacia confusa</i>	台灣相思	196	9	6	Low	Fair	Fair	Fair	Low	Exotic	normal

Appendix C – Tree Survey Schedule

Location: Lot no. 403 in D.D. 103

Date of Inspection: 2024/05/23

Surveyed by: LEE HIU WA

Tree No.	Tree Species		Tree Size Measurement			Amenity Value (High / Medium /Low)	Form (Good/ Fair/ Poor)	Health Condition (Good / Fair / Poor /Dead)	Structural Condition (Good/ Fair/ Poor)	Suitability for Transplanting	Origin	Remarks
	Scientific Name	Chinese Name	DBH(mm)	Overall Height (m)	Crown Spread (m)					(High/ Medium/ Low)		
T138	<i>Acacia confusa</i>	台灣相思	128	9	4	Low	Fair	Fair	Fair	Low	Exotic	normal
T139	<i>Acacia confusa</i>	台灣相思	105	5	3	Low	Fair	Fair	Fair	Low	Exotic	bent (trunk)
T140	<i>Acacia confusa</i>	台灣相思	194	9	4	Low	Fair	Fair	Fair	Low	Exotic	normal
T141	<i>Macaranga tanarius</i> var. tomentosa	血桐	117	4	4	Low	Fair	Fair	Fair	Low	Native	lean, exposed root
T142	<i>Acacia confusa</i>	台灣相思	112	6	3	Low	Fair	Fair	Fair	Low	Exotic	dead tree
T143	<i>Dimocarpus longan</i>	龍眼	187	7	4	Low	Fair	Fair	Fair	Low	Exotic	sparse
T144	<i>Bischofia javanica</i>	秋楓	130	5	6	Low	Fair	Fair	Fair	Low	Native	wound (trunk), sparse
T145	<i>Dimocarpus longan</i>	龍眼	149	6	4	Low	Fair	Fair	Fair	Low	Exotic	lean
T146	<i>Aporosa dioica</i>	銀柴	73	5	3	Low	Fair	Fair	Fair	Low	Native	lean
T147	<i>Leucaena leucocephala</i>	銀合歡	74	6	4	Low	Fair	Fair	Fair	Low	Exotic	lean, wound (root)
T148	<i>Leucaena leucocephala</i>	銀合歡	128	6	6	Low	Fair	Fair	Fair	Low	Exotic	lean
T149	<i>Macaranga tanarius</i> var. tomentosa	血桐	97	6	4	Low	Fair	Fair	Fair	Low	Native	wound
T150	<i>Dimocarpus longan</i>	龍眼	94	4	3	Low	Fair	Fair	Fair	Low	Native	normal
T151	<i>Litsea monopetala</i>	假柿樹	84	7	3	Low	Fair	Fair	Fair	Low	Native	normal
T152	<i>Ficus hispida</i>	對葉榕	147	7	4	Low	Fair	Fair	Fair	Low	Native	exposed root
T153	<i>Macaranga tanarius</i> var. tomentosa	血桐	193	7	7	Low	Fair	Fair	Fair	Low	Native	girdling roots
T154	<i>Leucaena leucocephala</i>	銀合歡	182	8	6	Low	Fair	Fair	Fair	Low	Exotic	wound (trunk), vine
T155	<i>Macaranga tanarius</i> var. tomentosa	血桐	164	5	7	Low	Fair	Fair	Fair	Low	Native	cavity, exposed root
T156	<i>Ficus hispida</i>	對葉榕	170	6	4	Low	Fair	Fair	Fair	Low	Native	normal
T157	<i>Ficus hispida</i>	對葉榕	138	5	6	Low	Fair	Fair	Fair	Low	Native	normal
T158	<i>Macaranga tanarius</i> var. tomentosa	血桐	97	3	3	Low	Poor	Fair	Fair	Low	Native	fallen
T159	<i>Ficus hispida</i>	對葉榕	138	6	4	Low	Fair	Fair	Fair	Low	Native	normal

Appendix C – Tree Survey Schedule

Location: Lot no. 403 in D.D. 103

Date of Inspection: 2024/05/23

Surveyed by: LEE HIU WA

Tree No.	Tree Species		Tree Size Measurement			Amenity Value (High / Medium /Low)	Form (Good/ Fair/ Poor)	Health Condition (Good / Fair / Poor /Dead)	Structural Condition (Good/ Fair/ Poor)	Suitability for Transplanting	Origin	Remarks
	Scientific Name	Chinese Name	DBH(mm)	Overall Height (m)	Crown Spread (m)					(High/ Medium/ Low)		
T160	<i>Ficus hispida</i>	對葉榕	102	6	4	Low	Fair	Fair	Fair	Low	Native	root restriction
T161	<i>Ficus hispida</i>	對葉榕	98	6	3	Low	Fair	Fair	Fair	Low	Native	root restriction, sparsed
T162	<i>Ficus hispida</i>	對葉榕	184	6	3	Low	Fair	Fair	Fair	Low	Native	exposed root
T163	<i>Ficus hispida</i>	對葉榕	100	5	3	Low	Fair	Fair	Fair	Low	Native	root restriction, bent (trunk)
T164	<i>Macaranga tanarius</i> var. <i>tomentosa</i>	血桐	125	5	5	Low	Fair	Fair	Fair	Low	Native	lean, exposed root
T165	<i>Ficus hispida</i>	對葉榕	263	8	5	Low	Fair	Fair	Fair	Low	Native	wound (trunk), root restriction, dead branches
T166	<i>Ficus hispida</i>	對葉榕	168	8	3	Low	Fair	Fair	Fair	Low	Native	exposed root, vine
T167	<i>Macaranga tanarius</i> var. <i>tomentosa</i>	血桐	175	9	4	Low	Fair	Fair	Fair	Low	Native	root restriction, lean
T168	<i>Macaranga tanarius</i> var. <i>tomentosa</i>	血桐	103	9	2	Low	Fair	Fair	Fair	Low	Native	root restriction
T169	<i>Litsea monopetala</i>	假柿樹	427	14	3	Low	Fair	Fair	Fair	Low	Native	exposed root, root restriction, vine, lean, dead branches
T170	<i>Macaranga tanarius</i> var. <i>tomentosa</i>	血桐	123	5	3	Low	Fair	Fair	Fair	Low	Native	exposed root
T171	<i>Leucaena leucocephala</i>	銀合歡	158	12	4	Low	Fair	Fair	Fair	Low	Exotic	root restriction
T172	<i>Leucaena leucocephala</i>	銀合歡	258	12	7	Low	Fair	Fair	Fair	Low	Exotic	lean, root restriction, wound (trunk)
T173	<i>Macaranga tanarius</i> var. <i>tomentosa</i>	血桐	103 + 72	6	4	Low	Fair	Fair	Fair	Low	Native	root restriction
T174	<i>Ficus hispida</i>	對葉榕	240	6	5	Low	Fair	Fair	Fair	Low	Native	vine

Appendix D–Tree Photographic Records



T1





T2





T3





T4





T5





T6





T7





T8





T9





T10





T11





T12





T13





T14





T15





T16





T17





T18





T19





T20





T21





T22





T23





T24





T25





T26





T27





T28





T29





T30





T31





T32





T33





T34





T35





T36





T37





T38





T40





T41





T42





T43





T44





T45





T46





T47





T48





T49





T50





T51





T52





T53





T54





T55





T56





T57





T58





T59





T60





T61





T62





T63





T64





T65





T66





T67





T68



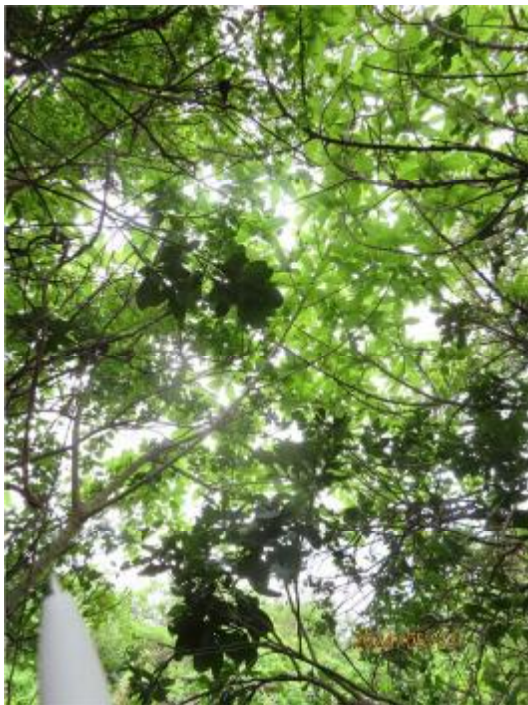


T69





T70





T71





T72



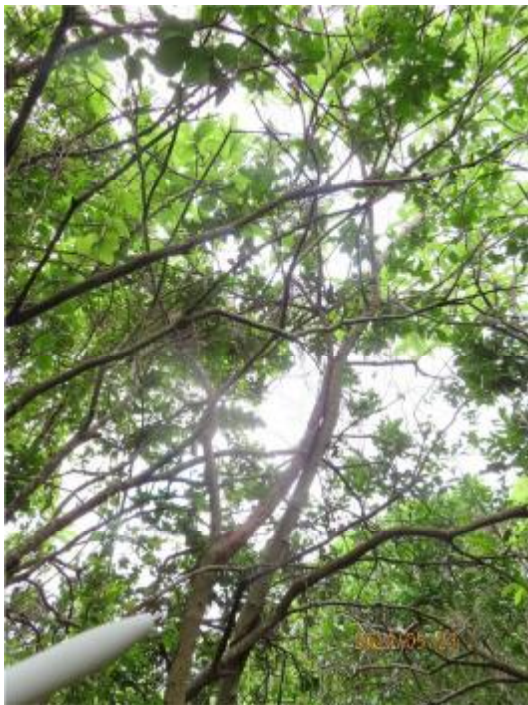


T73





T74





T75





T76





T77





T78





T79





T80





T81





T82





T83





T84





T85





T86





T87





T88





T89





T90





T91





T92





T93





T94



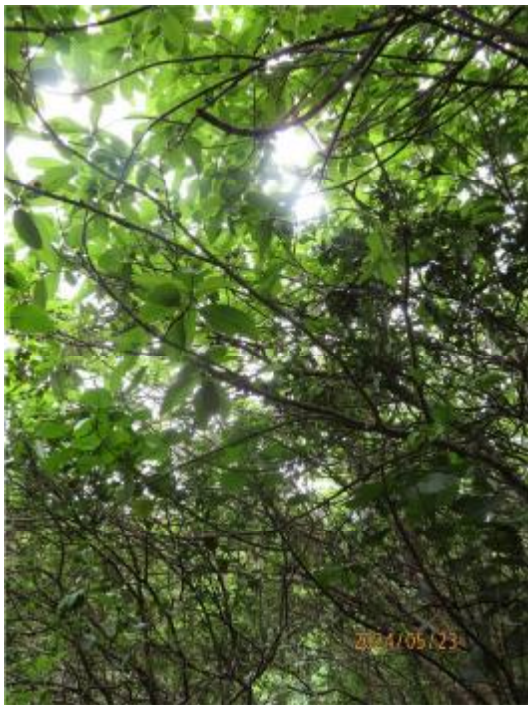


T95





T96





T97





T98





T99





T100





T101





T102





T103





T104





T105





T106





T107





T108





T109





T110





T111





T112





T113





T114





T115





T116





T117





T118





T119





T120





T121





T122





T123





T124





T125





T126





T127





T128





T129





T130





T131





T132





T133





T134





T135





T136





T137





T138





T139





T140





T141





T142





T143





T144





T145





T146





T147





T148





T149





T150





T151





T152





T153





T154





T155





T156





T157





T158





T159





T160





T161





T162





T163





T164





T165





T166





T167





T168





T169





T170





T171





T172





T173





T174



Compensatory Planting Proposal

LOT NO. 403RP (PART) IN D.D. 103

Ms. Lee Hiu Wa



ISA Certified Arborist (HK-1104A)

Tree Management Personnel Registration Scheme

Arborist (TM522127)

Tree Risk Assessor (TM522127)

Tree Work Supervisor (TM522127)

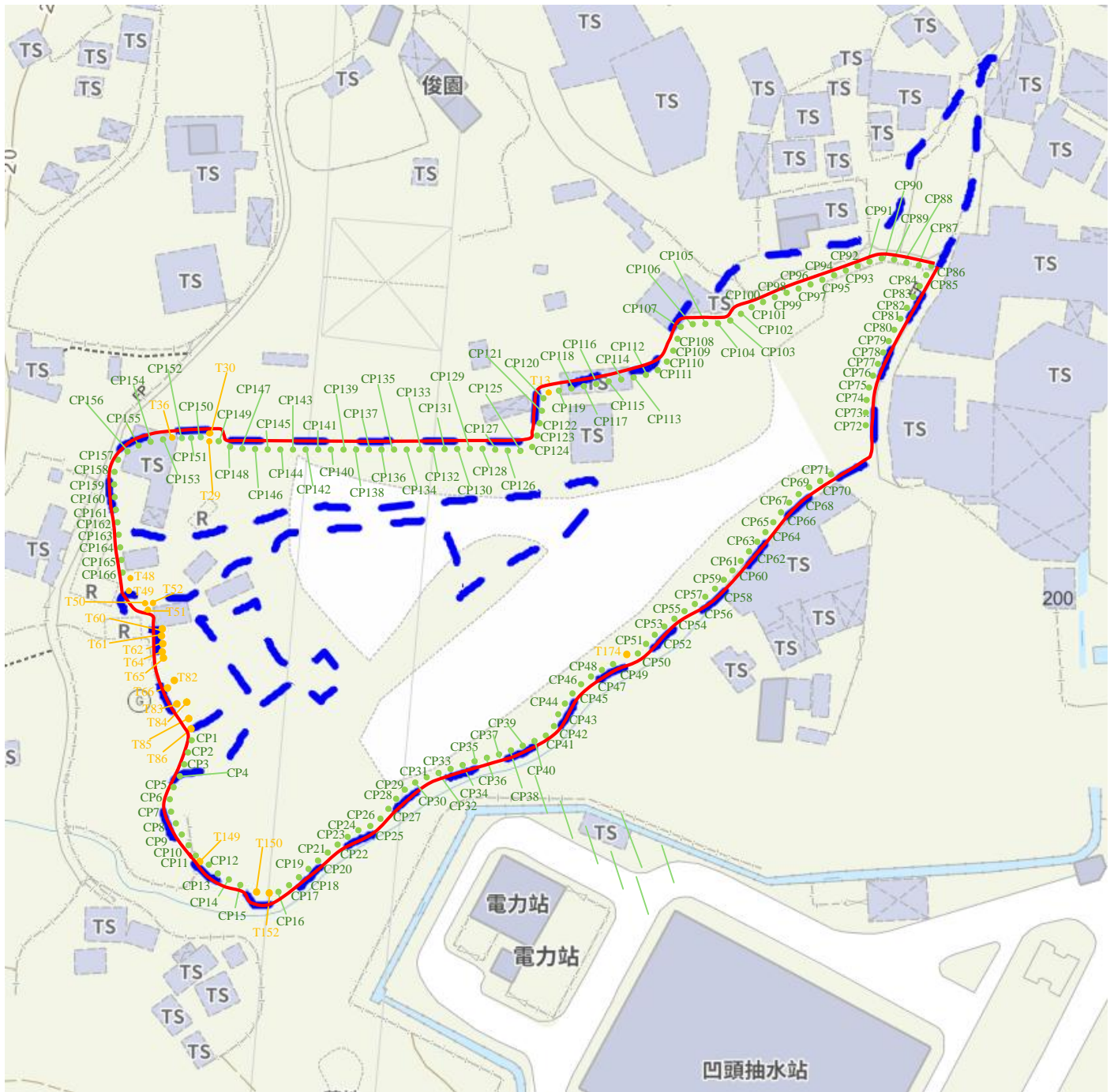
CONTENTS

<i>1</i>	<i>OBJECTIVE</i>	<i>2</i>
<i>2</i>	<i>LOCATION PLAN OF COMPENSATORY TREES</i>	<i>3</i>
<i>3</i>	<i>THE REPLANTING AREA</i>	<i>4</i>
<i>4</i>	<i>RECOMMAND REPLANTED TREES (CP1-166)</i>	<i>5</i>
<i>5</i>	<i>SUMMARY OF PROPOSED PLANTING SPECIES FOR COMPENSATORY PLANTING</i>	<i>7</i>

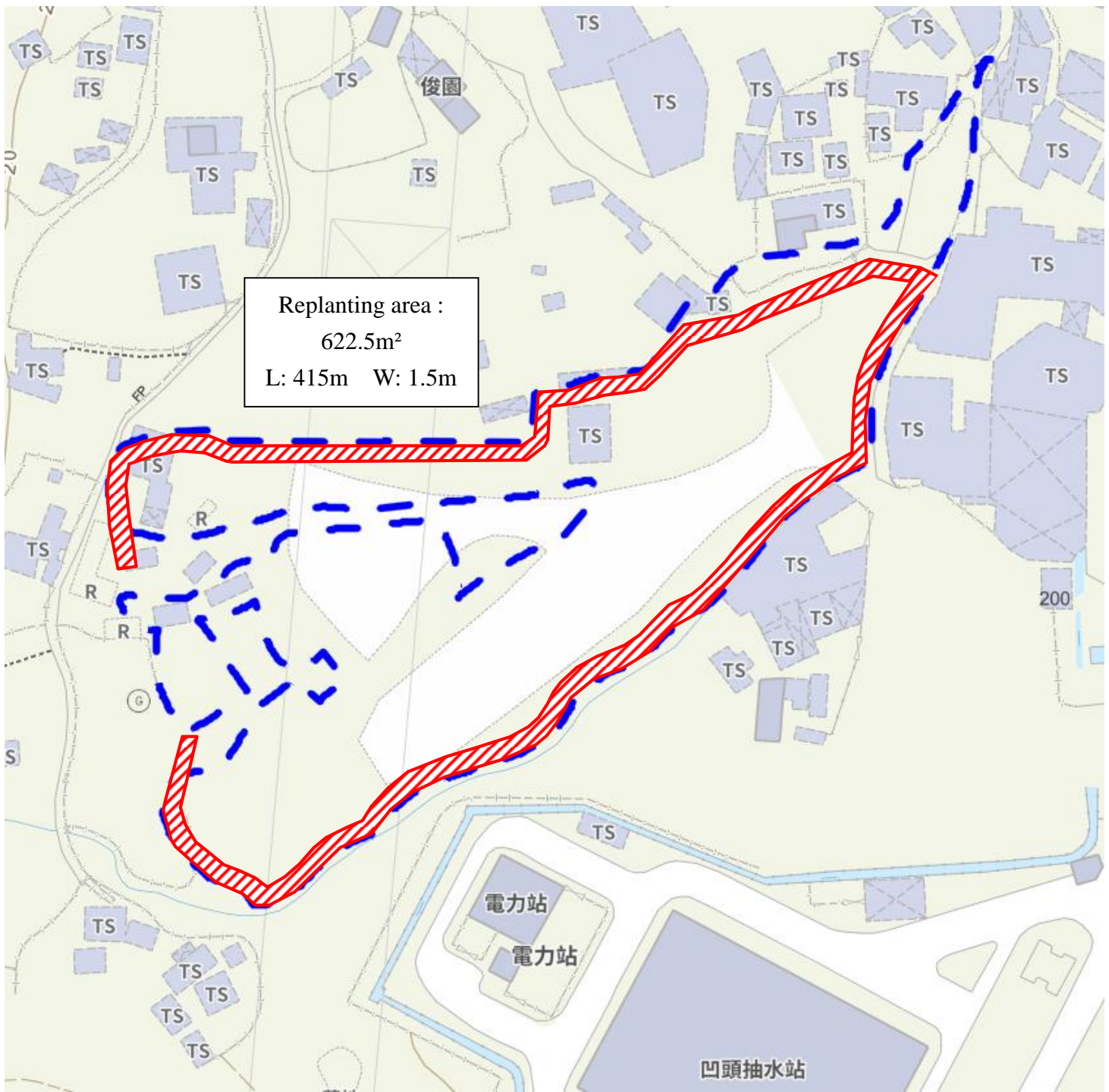
1 OBJECTIVE

The loss of the concerned trees within will be compensated according to item 4 of Section I, Appendix II of LAO PN No. 2/2020 and 2/2020A. In general, implementation of compensatory planting, of a ratio not less than 1:1 in terms of quantity and quality, within the subject Lot would be acceptable. That is, the total number of compensatory trees shall be equal or not less than that of the lost tree. According to proposed layout plan, the site is fully occupied by facilities. There is not adequate space for health growth of the total number of compensatory trees to their mature size. We recommend replanting 89 whip trees and 77 standard trees within the Lot.

2 LOCATION PLAN OF COMPENSATORY TREES



3 THE REPLANTING AREA



4 THE REPLANTING AREA

RECOMMEND COMPENSATORY TREES

4.1 Replanting area (A): 223m²

- The gradient of the landscape: 0°

4.1.1 Species

Ø 5 nos. of *Celtis sinensis* (朴樹) : CP1, 3, 5, 7, 9

Ø 5 nos. of *Cinnamomum camphora* (樟) : CP11, 13, 15, 17, 19

Ø 5 nos. of *Cinnamomum burmanni* (陰香) : CP21, 23, 25, 27, 29

Ø 5 nos. of *Lagerstroemia speciosa* (大花紫薇) : CP31, 33, 35, 37, 39

Ø 7 nos. of *Syzygium nervosum* (水翁) : CP41, 43, 45, 47, 49, 61, 62

Ø 5 nos. of *Tabebuia chrysantha* (黃花風鈴木) : CP52, 54, 56, 58, 60

Ø 7 nos. of *Sterculia lanceolata* (假蘋婆) : CP63, 65, 67, 69, 71, 164, 166

Ø 7 nos. of *Liquidambar formosana* (楓香) : CP 79, 81, 114, 116, 118, 120, 122

Ø 5 nos. of *Xanthostemon chrysanthus* (金蒲桃) : CP83, 85, 87, 89, 91

Ø 6 nos. of *Osmanthus fragrans* (桂花) : CP103, 104, 106, 108, 110, 112

Ø 10 nos. of *Schefflera heptaphylla* (鴨腳木) : CP124, 126, 128, 130, 132, 144, 146, 148, 150, 152

Ø 5 nos. of *Triadica sebifera* (烏桕) : CP134, 143, 138, 140, 142

Ø 5 nos. of *Bischofia javanica* (秋楓) : CP154, 156, 158, 160, 162

- DBH(mm): 50 (standard tree)
- Height(m): 3
- Spread(m): 1
- Live-crown ratio (%): 50
- Rootball: A rootball at least 450 mm in diameter and 300 mm deep
- Surface treatment: the recipient tree pits will be backfilled with the mixture of 1 part of soil condition with 4 parts of existing soil
- Alinement: 3 meters centre apart will be proposed between the compensatory and existing trees for having better development. Also the compensation trees will be planted at least 1.2m from drainage, channel and curb.
- Depth of soil: at least 1.2m excluding drainage layer

4.1.2 Species

Ø 20 nos. of *Aglaia odorata*(米仔蘭) : CP2, 4, 6, 8, 10, 42, 44, 46, 48, 50, 94, 96, 98, 100, 102, 125, 127, 129, 131, 133

Ø 33 nos. of *Polyspora axillaris* (大頭茶) : CP12, 14, 16, 18, 20, 52, 54, 56, 58, 60, 64, 66, 68, 70, 72, 73, 74, 75, 76, 77, 78, 80, 82, 115, 117, 119, 121, 123, 145, 147, 149, 151, 153

Ø 25 nos. of *Podocarpus macrophyllus* (羅漢松) : CP22, 24, 26, 28, 30, 32, 34, 36, 38, 40, 84, 86, 88, 90, 92, 105, 107, 109, 111, 113, 135, 137, 139, 141, 143

Ø 11 nos. of *Murraya paniculata* (九里香) : CP93, 95, 97, 99, 101, 155, 157, 159, 161, 163, 165

- DBH(mm): 15 (whip tree)
- Height(m): 1.5
- Spread(m): 0.5
- Live-crown ratio (%): 50
- Rootball: A rootball at least 125mm in diameter and 200mm deep
- Surface treatment: the recipient tree pits will be backfilled with the mixture of 1 part of soil condition with 4 parts of existing soil
- Alinement: 2 meters centre apart will be proposed between the compensatory and existing trees for having better development. Also the compensation trees will be planted at least 1.2m from drainage, channel and curb.
- Depth of soil: at least 1.2m excluding drainage layer

5 SUMMARY OF PROPOSED PLANTING SPECIES FOR COMPENSATORY PLANTING

<i>Summary of Proposed Planting Species for Compensatory Planting</i>							
Location	Species	DBH (mm)	Crown Spread (m)	Overall Height (m)	Quantity (nos.)	Live-crown ratio (%)	Planting Matrix
Agricultural area	<i>Aglaia odorata</i> (米仔蘭)	15	0.5	1.5	20	50	2m centre apart
Agricultural area	<i>Bischofia javanica</i> (秋楓)	50	1	3	5	50	3m centre apart
Agricultural area	<i>Cinnamomum burmanni</i> (陰香)	50	1	3	5	50	3m centre apart
Agricultural area	<i>Cinnamomum camphora</i> (樟)	50	1	3	5	50	3m centre apart
Agricultural area	<i>Celtis sinensis</i> (朴樹)	50	1	3	5	50	3m centre apart
Agricultural area	<i>Lagerstroemia speciosa</i> (大花紫薇)	50	1	3	5	50	3m centre apart t
Agricultural area	<i>Liquidambar formosana</i> (楓香)	50	1	3	7	50	3m centre apart
Agricultural area	<i>Murraya paniculata</i> (九里香)	15	0.5	1.5	11	50	2m centre apart
Agricultural area	<i>Podocarpus macrophyllus</i> (羅漢松)	15	0.5	1.5	25	50	2m centre apart
Agricultural area	<i>Polyspora axillaris</i> (大頭茶)	15	0.5	1.5	33	50	2m centre apart
Agricultural area	<i>Osmanthus fragrans</i> (桂花)	50	1	3	6	50	3m centre apart
Agricultural area	<i>Schefflera heptaphylla</i> (鴨腳木)	50	1	3	10	50	3m centre apart

Agricultural area	<i>Sterculia lanceolata</i> (假蘋婆)	50	1	3	7	50	3m centre apart
Agricultural area	<i>Syzygium nervosum</i> (水翁)	50	1	3	7	50	3m centre apart
Agricultural area	<i>Tabebuia chrysantha</i> (黃花風鈴木)	50	1	3	5	50	3m centre apart
Agricultural area	<i>Triadica sebifera</i> (烏柏)	50	1	3	5	50	3m centre apart
Agricultural area	<i>Xanthostemon chrysanthus</i> (金蒲桃)	50	1	3	5	50	2m centre apart
Total					166		